

CIRCUIT

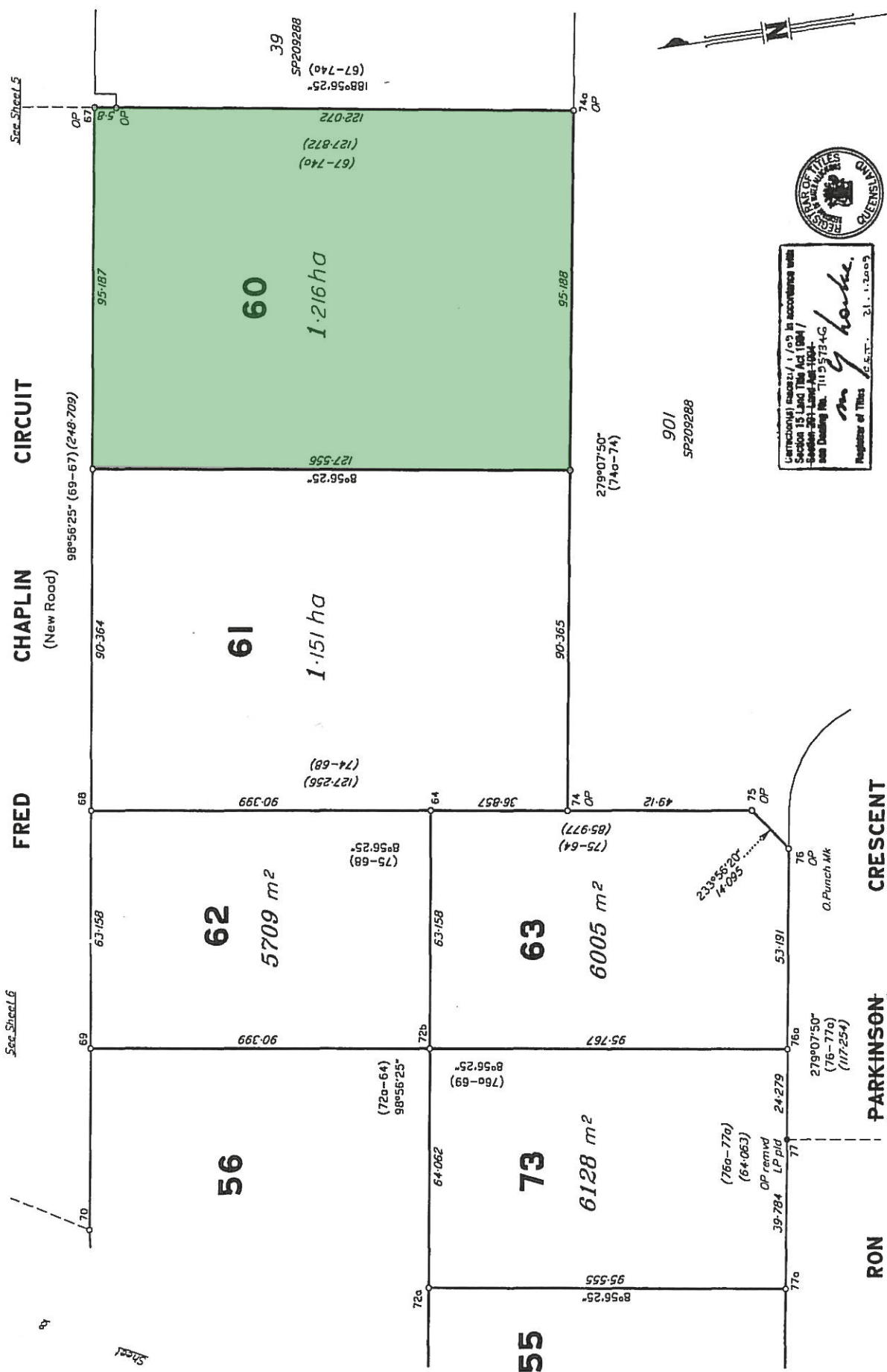
CHAPLIN
(New Road)

FRED

CRESCENT

PARKINSON
[PARKINSON]

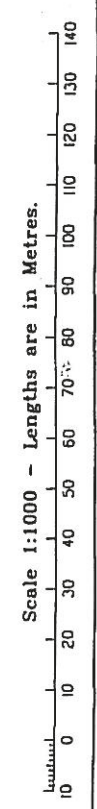
RON
(New Road)



Umetronika mazar/1/03 in accordance with
Section 15 Land Title Act 1994 /
Section 201 Land Act 1994
and Drawing No. 1155734-G
m y horka
Registrar of Titles
C.S.T. 21.1.2009



Reg. placed at all new corners, unless
otherwise stated.
For tabulations see Sheet 15



Insert Plan Number SP209290

State copyright reserved.