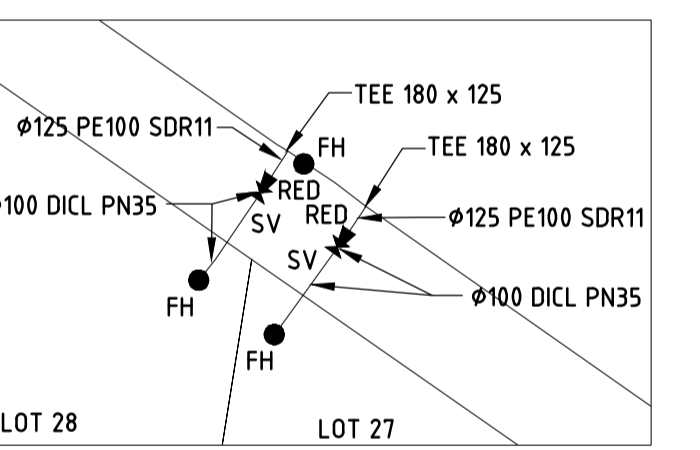
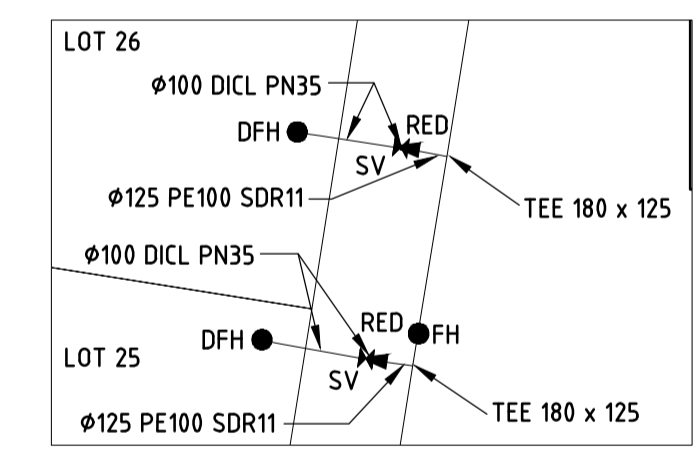
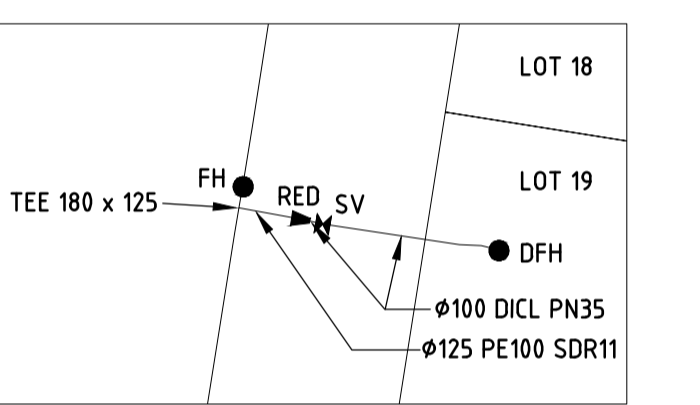
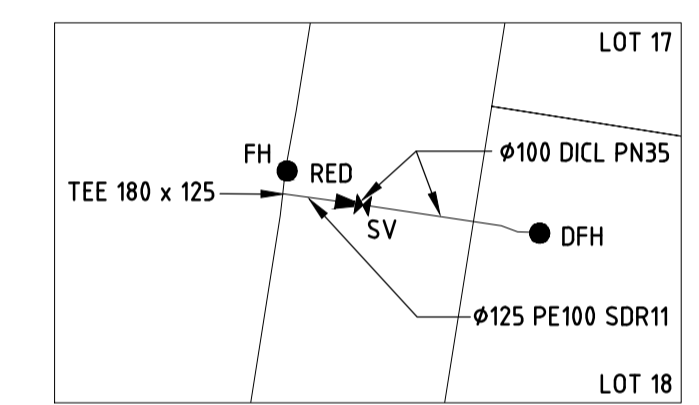
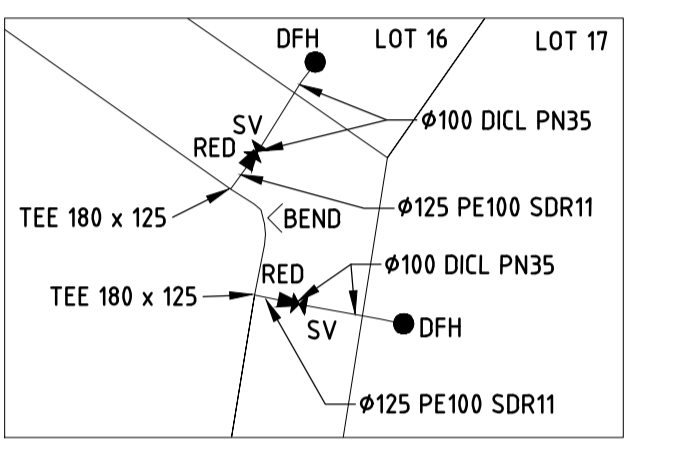
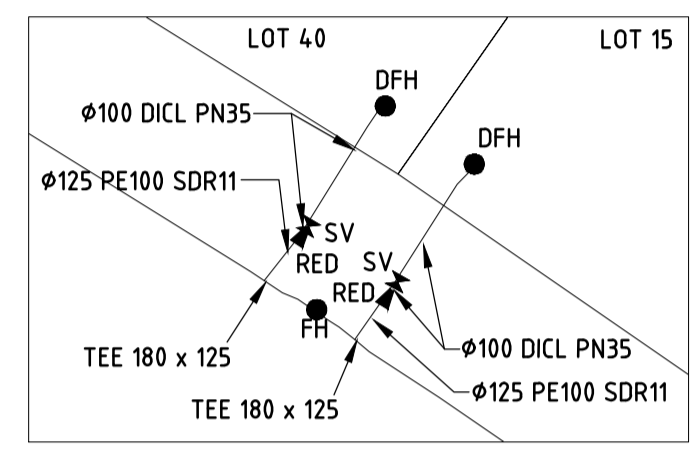
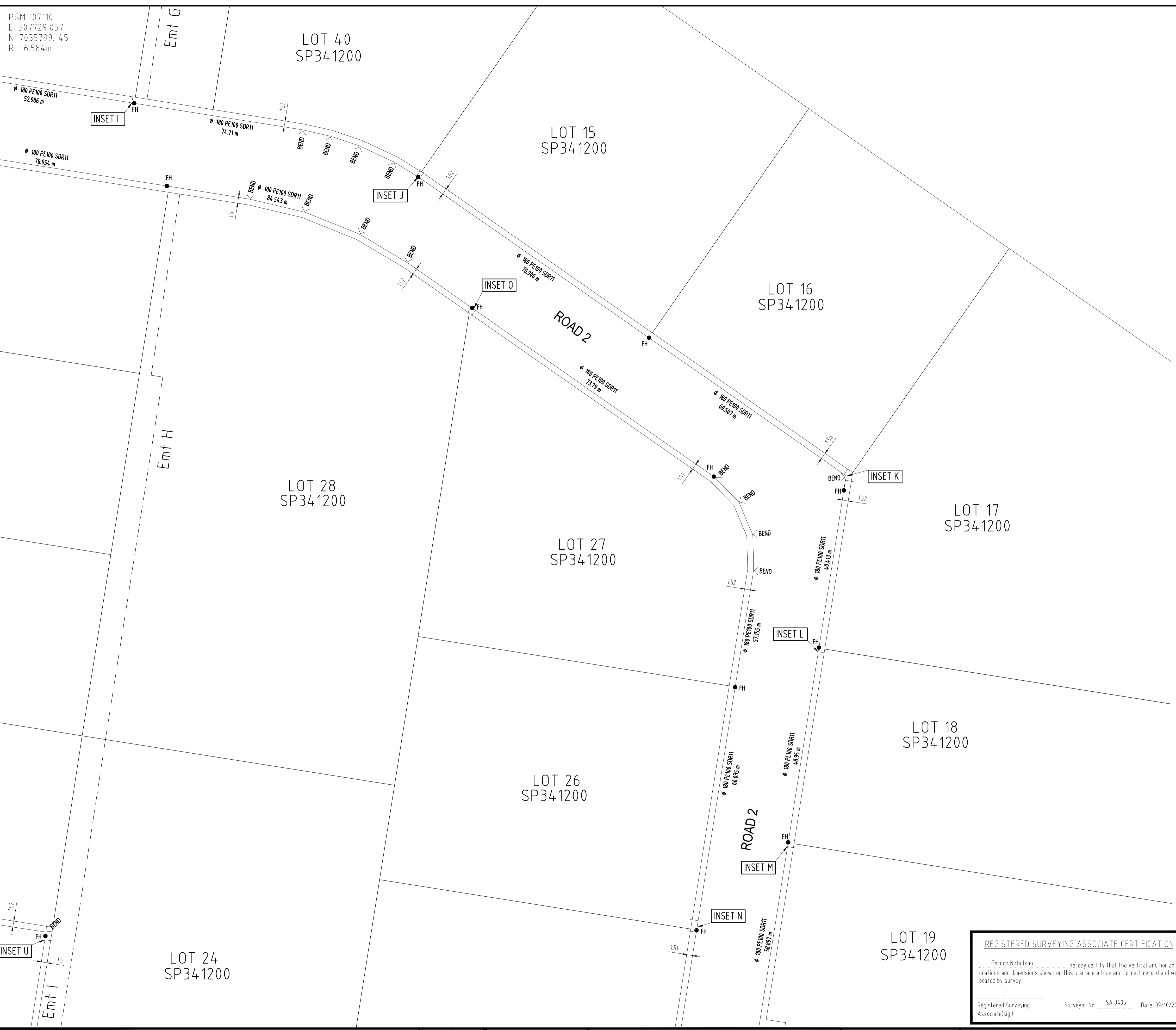


PSM 107110
E: 507729.057
N: 7035799.145
RL: 6.584m

LEGEND	
	EXISTING WATER MAIN
	WATER MAIN (DN150 DICL PN35)
	WATER MAIN (DN150 PVC-O PN16)
	FH/DFH FIRE HYDRANT / DUCKFOOT
	BEND BEND
	END END CAP
	SV STOP/GATE VALVE
	RED REDUCER

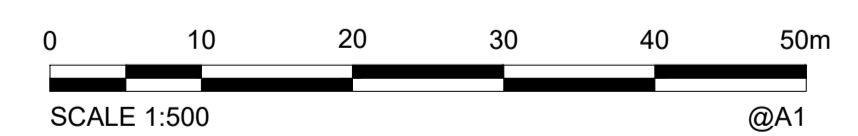


ENGINEER'S CERTIFICATION

I, _____, hereby certify that:

- The information contained in this drawing / document is in compliance with approved drawings and design.
- The new water and sewerage works defined by this drawing have been designed and constructed in accordance with the SEQ Code.
- This represents an accurate record of as-constructed works.
- I accept responsibility for the information contained in this drawing / document.

RPED (signature) RPED No. _____ Date: _____



REGISTERED SURVEYING ASSOCIATE CERTIFICATION

I, Gordon Nicholson, hereby certify that the vertical and horizontal locations and dimensions shown on this plan are a true and correct record and were located by survey.

Registered Surveying Associate (sig.) Surveyor No. SA 3405 Date: 09/10/2023

AS CONSTRUCTED

COORDINATE DATUM NOTE:
HORIZONTAL COORDINATES (E,N) SUPPLIED ARE MAPPING GRID OF AUSTRALIA (MGA), ZONE 56 BASED ON THE UNIVERSAL TRANSVERSE MERCATOR PROJECTION AND THE GEOCENTRIC DATUM OF AUSTRALIA 2020.

A1	INDEX	DATE	AS CONSTRUCTED	PMc	DAM	JF					
		26/09/2023									
	REVISIONS										

shadforth
99 Sandalwood Lane, Forest Glen QLD 4556
P: 07 5438 3300 F: 07 5438 3388 E: admin@shadcivil.com.au



Unitywater
UNITYWATER APPROVAL No. 202001622650-AMD02
SUNSHINE COAST INDUSTRIAL PARK STAGE 2
AS CONSTRUCTED - WATERMAIN
SHEET 3 OF 5

SHEET 3 OF 5 SHEETS	SCALE 1:500
REVISION DATE 09/10/2023	REVISION A
DISCIPLINE CODE C	
DRAWING NO. U-2022-4384-WAT-03	