

PSM 107110
E: 507729.057
N: 7035799.145
RL: 6.584m



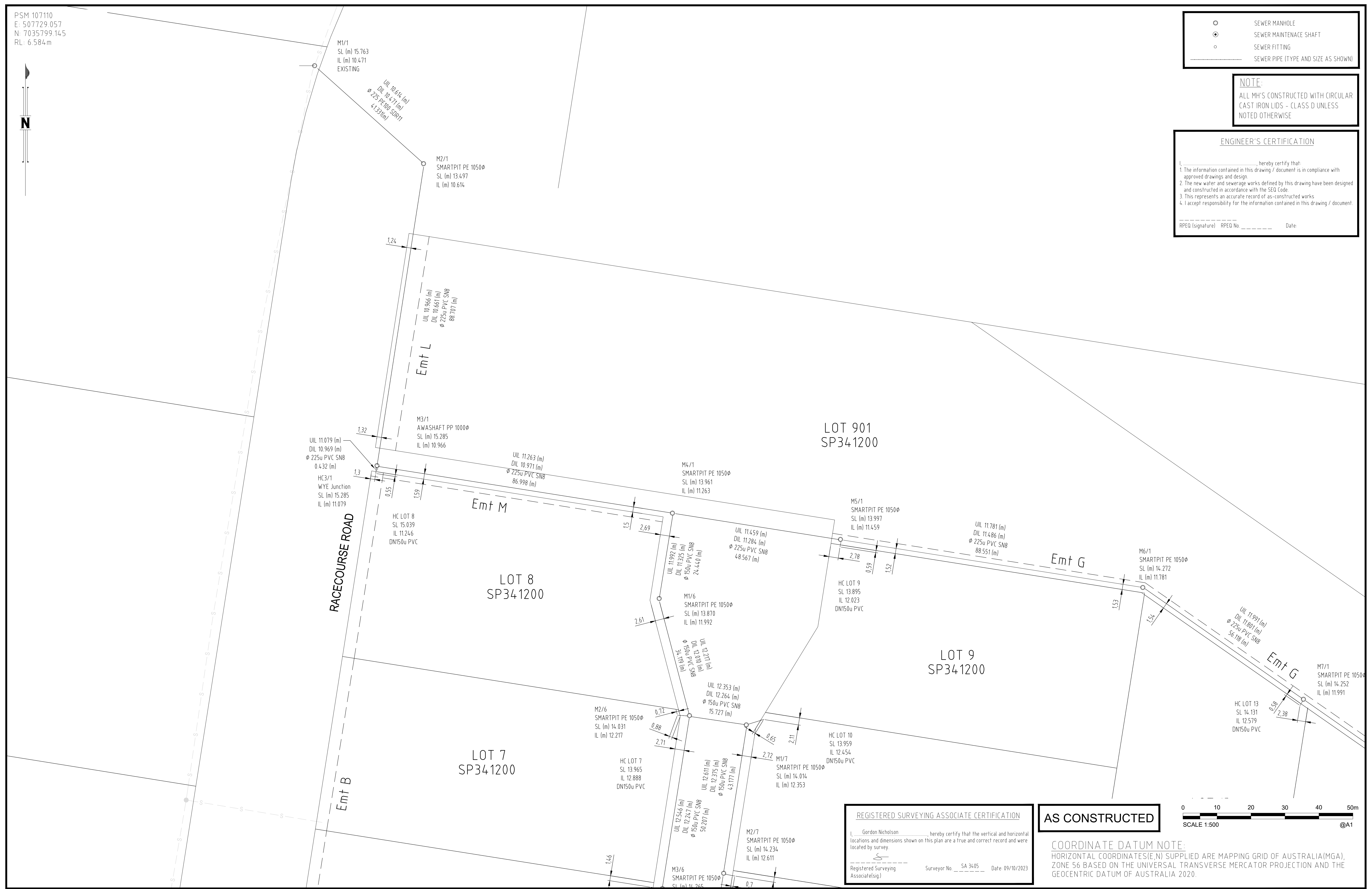
- SEWER MANHOLE
- ⊙ SEWER MAINTENANCE SHAFT
- SEWER FITTING
- SEWER PIPE (TYPE AND SIZE AS SHOWN)

NOTE:
ALL MH'S CONSTRUCTED WITH CIRCULAR CAST IRON LIDS - CLASS D UNLESS NOTED OTHERWISE

ENGINEER'S CERTIFICATION

I, _____, hereby certify that:
1. The information contained in this drawing / document is in compliance with approved drawings and design.
2. The new water and sewerage works defined by this drawing have been designed and constructed in accordance with the SEQ Code.
3. This represents an accurate record of as-constructed works
4. I accept responsibility for the information contained in this drawing / document.

RPEQ (signature) RPEQ No. _____ Date: _____



RACECOURSE ROAD

LOT 901
SP341200

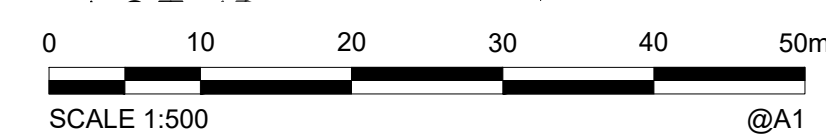
LOT 8
SP341200

LOT 9
SP341200

LOT 7
SP341200

REGISTERED SURVEYING ASSOCIATE CERTIFICATION
I, Gordon Nicholson, hereby certify that the vertical and horizontal locations and dimensions shown on this plan are a true and correct record and were located by survey.
Registered Surveying Associate (sig) Surveyor No. SA 3405 Date: 09/10/2023

AS CONSTRUCTED



COORDINATE DATUM NOTE:
HORIZONTAL COORDINATES (E,N) SUPPLIED ARE MAPPING GRID OF AUSTRALIA (MGA), ZONE 56 BASED ON THE UNIVERSAL TRANSVERSE MERCATOR PROJECTION AND THE GEOCENTRIC DATUM OF AUSTRALIA 2020.

A1	INDEX	DATE	REVISIONS	DRAWN	CHECKED	PASSED
	A	09/10/2023	AS CONSTRUCTED	PMC	DAM	JF

DRAWN	PMC	09/10/2023
CHECKED	DAM	09/10/2023
PASSED	JF	-

shadforth
99 Sandalwood Lane, Forest Glen QLD 4556
P: 07 5438 3300 F: 07 5438 3388 E: admin@shadcivil.com.au



Unitywater
UNITYWATER APPROVAL No. 202001622650-AMD02
SUNSHINE COAST INDUSTRIAL PARK STAGE 2
AS CONSTRUCTED - SEWER
SHEET 2 OF 6

SHEET 2 OF 6 SHEETS	SCALE 1500
REVISION DATE 09/10/2023	REVISION A
DISCIPLINE CODE C	
DRAWING NO. U-2022-4384-SEW-02	